

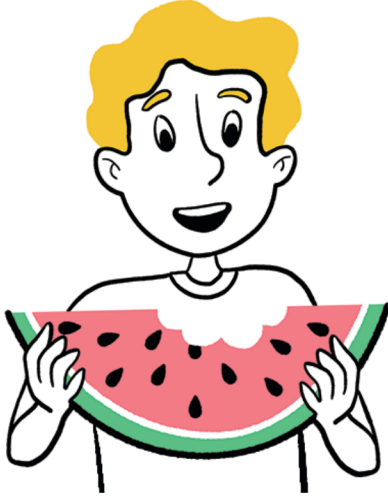


Verbonden schrift - Letter e

Schrijven

Naam:

Groep:



Handwriting practice lines for the letter 'e'. The first row shows a dotted 'e' with a starting dot and arrow. The second row shows a single dot. The remaining rows are blank for practice.

Handwriting practice line with three dotted 'e's followed by a series of dots for tracing.

Handwriting practice line with one dotted 'e' followed by a series of dots for tracing.

Handwriting practice line consisting of a series of dots for tracing.